

Numéro Du Style	5T337	
Collection	District	
Type De Produit	Dalles De Moquette	
Construction	Standard	Data + Performance
Type De Fabrication	ISO 2424	tufted 1/10" 39.4 per 10cm
Construction	ISO 2424	Tufté Structuré Bouclé à Motif
Méthode De Coloration	EN 994	100% Solution Teinte
Dimensions Du Produit	EN 994	50 cm x 50 cm 20 tiles (5 m²) per box
Sous-couche Primaire	ISO 2424	Pet Non-Woven
Sous-couche Secondaire	ISO 2424	Taskworx® Tile Bitume Modifié Par Polymère
Fibre	ISO 2424	Ecosolution Q® Polyamide 6
Épaisseur Du Velours	ISO 1765	6.2 mm
Épaisseur Du Velours Fini	ISO 1766	2.0 mm
Poids Total	ISO 8543	4084 g/m²
Poids Tufté	ISO 2424	474 g/m²
Poids Du Velours Utile	ISO 8543	217 g/m²
Densité Du Velours	ISO 8543	0.106 g/cm³
Contenu Recyclé Total		51% (pre-consumer 51% post-consumer 0%)

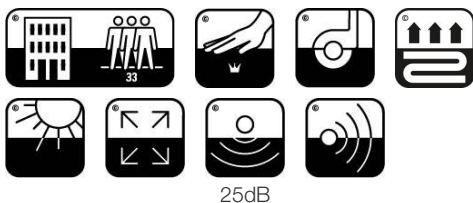
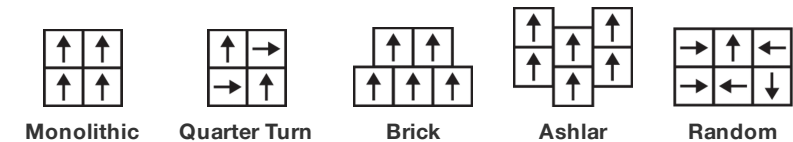


Données

Points	ISO 1763	153,000/m² 38.7 per 10cm
Propension Electrostatique	ISO 6356	≤ 2.0 kv (Stroll Test)
Classification d'Utilisation	EN 1307	33 Commercial Heavy
Classification Luxe	EN 1307	LC1
Stabilité Dimensionnelle	EN 986	≤ 0.2%
Isolation Acoustique	ISO 10140	25db
Classification d'Absorption Sonore	ISO 354/11654	0.15 Aw Class E
Résistance Thermique m² K/w	ISO 8302	0.081 M² K/W Tog 0.81
Dry Slip Resistance	ISO 13893	Pass / No Pulled Loops
Résistance De La Couleur À La Lumière	ISO 105-B02	>6
Inflammabilité	EN 13501-1	Bfl-S1 (Adhered Testing)
Chaise À Roulette	EN 985	≥2.4 Continuous USE

Limitée Commerciale De 15 Ans subject to installation in full accordance with manufacturer's instructions and a regular effective cleaning and maintenance programme.

Méthodes d'Installation Conseillées



Corporate Headquarters +1 800 257 7429 | +1 706 532 7984 | Atlanta +1 404 853 7429 | Bengaluru +91 80 6773 0202 | Beijing +86 10 6568 588 | Chicago +1 312 467 1331 | Dubai +971 4 584 6956 | Hong Kong +852 2623 0371 | Latin America (Miami) +1 305 827 5912 | London +44 207 961 4120 | Los Angeles +1 800 233 1614 | Melbourne +61 3 9939 8543 | Mexico City +55 5010 7600 | Mumbai +91 22 6284 5050 | Nantong +86 400 800 7429 | New York +1 212 953 7429 | Paris +33 (0) 1 81 22 44 39 | San Francisco +1 415 955 1920 | Santiago +562 2431 5000 x 550 | São Paulo +55 11 3071 1702 | Shanghai +86 21 3338 4000 | Singapore +65 6733 1811 | Sydney +1 800 556 302

Coordination Des Produits

Carpet Tile: **Intent Taskworx® Tile, Situation Taskworx® Tile**

Attributs + Certifications

Certifications Below Apply Exclusively To The Carpet Tile Rug Itself And Not The Lokworx Tabs Adhesive

Declaration of Performance

Building Research Establishment (BRE)

pays d'origine

BREEAM Contribution Credit

EU.DOP/0493/CPR/0621/0422/BT**A+ Health/A+ Retail 0.301/0.399 Ecopoints****United Kingdom****Certificate of Approval
Schools/Offices/Health/Industrial Shed
Retail**

Air Quality

Indoor Air Comfort Gold

M1

Certified**Certified**

Memberships

WGBC Framework

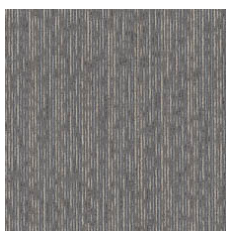
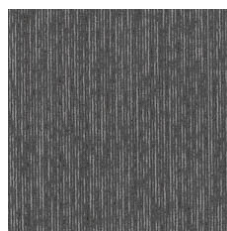
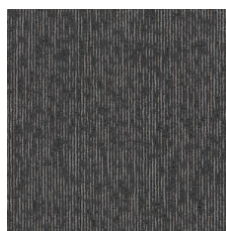
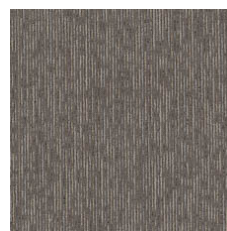
UKGBC

Emirates Green Building Council

Chemsec

WGBC Framework**UKGBC****Emirates Green Building Council****Chemsec**

Indice De Réflexion Lumineuse

Stellar 08505
LRV 3.3Skylight 08530
LRV 12.9Nocturne 08557
LRV 8.3Shale 08597
LRV 5.7Woodsmoke 08760
LRV 10Sierra 08761
LRV 11.6 **Quick Ship** En Stock - Royaume Uni

Informations Supplémentaires

Limitée commerciale de 15 ans

Specifications are subject to nominal manufacturing variance. Material supply and/or manufacturing processes may necessitate changes without notice.

This product is an exclusive design and may not be duplicated in any manner. Use of this design in the creation of another product design is also strictly prohibited.

Visit shawcontract.com/testing for more information.

Corporate Headquarters +1 800 257 7429 | +1 706 532 7984 | Atlanta +1 404 853 7429 | Bengaluru +91 80 6773 0202 | Beijing +86 10 6568 588 | Chicago +1 312 467 1331 | Dubai +971 4 584 6956 | Hong Kong +852 2623 0371 | Latin America (Miami) +1 305 827 5912 | London +44 207 961 4120 | Los Angeles +1 800 233 1614 | Melbourne +61 3 9939 8543 | Mexico City +55 5010 7600 | Mumbai +91 22 6284 5050 | Nantong +86 400 800 7429 | New York +1 212 953 7429 | Paris +33 (0) 1 81 22 44 39 | San Francisco +1 415 955 1920 | Santiago +562 2431 5000 x 550 | São Paulo +55 11 3071 1702 | Shanghai +86 21 3338 4000 | Singapore +65 6733 1811 | Sydney +1 800 556 302

© 2024 Shaw Industries Group, Inc., a Berkshire Hathaway Company
May 15, 2024

2 of 2